

## EMA HAULAGE ROUTE VALIDATED WITH LOGISTICS PROGRESS

### Highlights

- Identified logistics route involves trucking 130kms from Ema project to Prainha where regularly serviced 600t barges take cargo to Port of Chibatão
- Route involves a small trucking portion then direct barging to one of Latin America's largest private ports where Panamax sized vessels dock (Port of Chibatão)
- 600t barges make regular return trips along the river Aripuana and Madeira from Prainha to the Port of Chibatão a distance of 770kms
- 2 alternative routes have also been mapped and sourced
- Scoping Study on course for final report receipt mid-December

Brazilian Critical Minerals Limited (ASX:BCM) (BCM or the Company) is pleased to announce key milestones on logistics for the Ema Rare Earth Project in Brazil.

Substantial progress has been made with regards to defining the optimal materials handling solutions for delivering the final product being the Mixed Rare Earth Carbonate (MREC) to ports in Brazil.

Inspections and discussions have confirmed the suitability of the Port of Prainha, 130kms by road from the Ema Project, then barging to the Port of Chibatão, with capacity to handle Panamax sized vessels. Several alternative routes to port have also been identified.

The transport review confirmed that the quality of the road access between the site and port was of a high standard and suitable for transporting bulk materials at the required rate all year round. The river access from the Port of Prainha to the Port of Chibatão takes approximately 5-6 days and can carry cargos up to 600t, significantly more than the project's requirements for construction and operating purposes.

Commercial discussions have been initiated, relating to a proposed solution for the storage and ship loading of the Mixed Rare Earth Carbonate (MREC) final product.

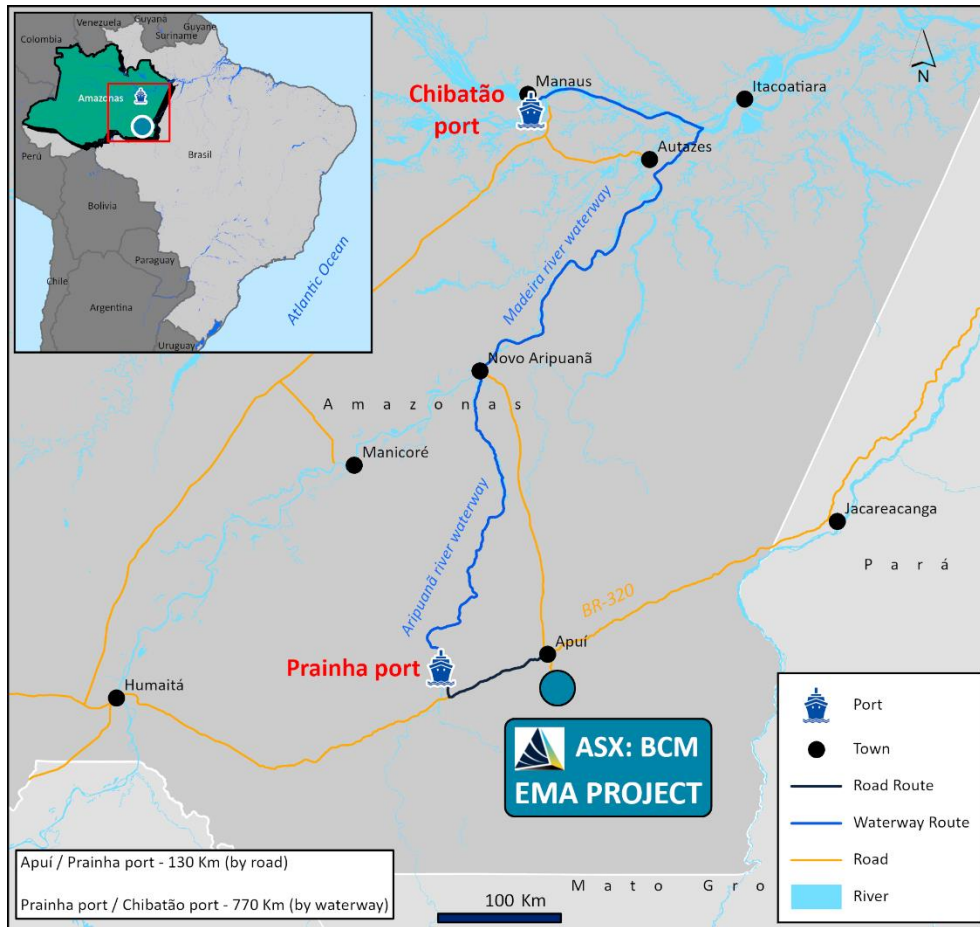


Figure 1. Logistics Route from Ema Project to Port of Chibatão.



Figure 2. Loading of Panamax sized vessels at the Port of Chibatão, one of the largest private Ports in Latin America.

This announcement has been authorised for release by the Board.

### About Brazilian Critical Minerals Ltd

Brazilian Critical Minerals Limited (BCM) is a mineral exploration company listed on the Australian Securities Exchange.

Its major exploration focus is Brazil, in the Apuí region, where BCM has discovered a world class Ionic Adsorbed Clay (IAC) Rare Earth Elements deposit. The Ema IAC project is contained within the 781 km<sup>2</sup> of exploration tenements within the Colider Group.

BCM has defined an inferred MRE of **1.02Bt<sup>1</sup>** of REE's with metallurgical recoveries averaging **68%<sup>2</sup>** MREO.

The Company is currently converting a portion of this MRE from Inferred into the Indicated category with an extensive drill program which will inform the scoping study and economic analysis due for completion in late 2024.



### For further information, please contact:

**Andrew Reid**

*Managing Director*

Brazilian Critical Minerals Ltd

**E: [andrew.reid@braziliancriticalminerals.com](mailto:andrew.reid@braziliancriticalminerals.com)**

**M: +61 432 740 975**

### References

<sup>1</sup> Brazilian Critical Minerals (ASX:BCM) ASX Announcement “Massive Maiden Mineral Resource Estimate for Ema Project” 22.04.24

<sup>2</sup> Brazilian Critical Minerals (ASX:BCM) ASX Announcement “World Leading Recoveries Confirmed at Ema Project” 07.05.24

The Company confirms that it is not aware of any new information or data that materially affects the information included in the relevant market announcement and, in the case of mineral resource estimate, that all material assumptions and technical parameters underpinning the estimates in the relevant market announcement continue to apply and have not materially changed. Refer to ASX announcement dated 22 April 2024.