



## ASX Announcement

11 June 2019

### EMA TRIAL MINING LICENCE GRANTED

Brazilian gold explorer, BBX Minerals (ASX: BBX or “the Company”) is pleased to announce the formal granting of the Ema trial mining licence, gazetted in the Amazonas state Government Gazette on June 7 (see figure 1 for location). The licence is valid until March 3 2020 and can be renewed on an annual basis.

The Ema tenement is located approximately 30km’s from the regional centre of Apui (population 20,000) with direct access to the trial mining area via a well-maintained gravel road (see figure 1). The trial mining licence allows BBX to mine 50,000 tonnes per annum, excluding overburden.

The Company is continuing to work with the authorities to finalise the granting of the Três Estados trial mining licence.

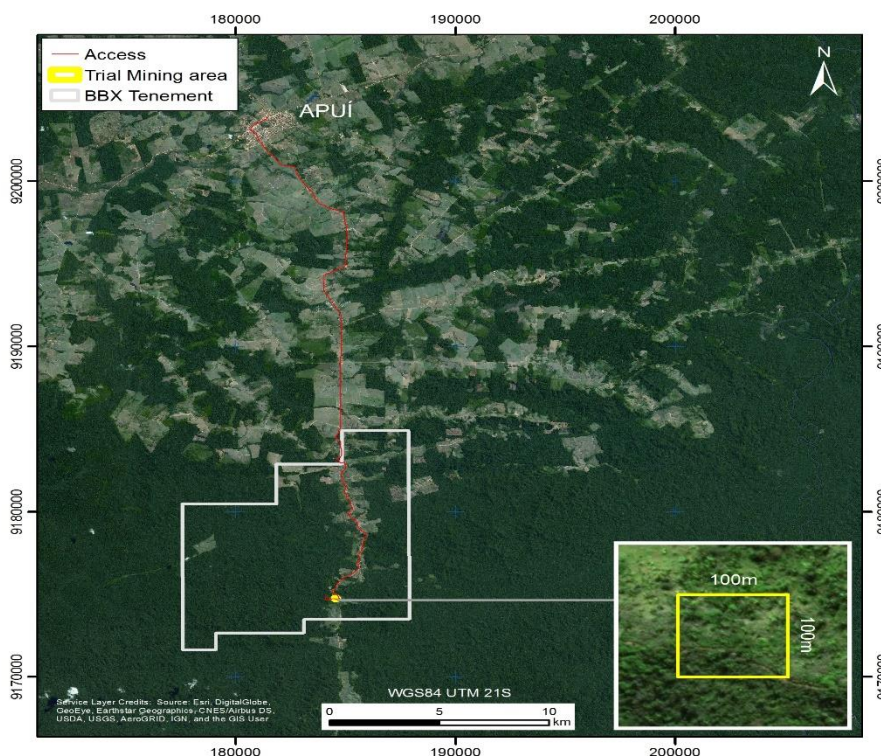


Fig. 1. Ema trial mining location map

**BBX Minerals Ltd.**  
ASX: BBX  
[www.bbxminerals.com.au](http://www.bbxminerals.com.au)

**Issued Capital**  
404.27 million shares  
8.20 million options

**Registered Office**  
50 Angove Street  
North Perth WA

T. +61 8 6955 2955  
F. +61 8 6210 1153

**Brazilian Office**  
Av Jornalista Riccardo Marinho  
360 Ed Cosmopolitana Sala  
Barra da Tijuca  
Rio de Janeiro

T. +55 21 2439 5700

**Directors**  
Jeff McKenzie  
Michael Schmulian  
Will Dix

**For more information:**

Jeff McKenzie  
CEO  
BBX Minerals Ltd  
+64 22 3421271  
[Jeff.McKenzie@bbxminerals.com.au](mailto:Jeff.McKenzie@bbxminerals.com.au)

**About BBX Minerals Ltd**

BBX Minerals Limited (ASX: BBX) is a mineral exploration and mining company listed on the Australian Securities Exchange. Its major focus is Brazil, mainly in the southern Amazon, a region BBX believes is vastly underexplored with high potential for the discovery of world class gold and copper deposits.

BBX's key assets are the Juma East, Três Estados and Ema Gold Projects in the Apuí region, Amazonas State. The company has 58.1km<sup>2</sup> of exploration tenements within the Colider Group, a prospective geological environment for epithermal gold and Cu-Au porphyry deposits. The region is under-explored and has the potential to provide BBX with a pipeline of high-growth, greenfields gold discoveries

**BBX Minerals Ltd.**  
ASX: BBX  
[www.bbxminerals.com.au](http://www.bbxminerals.com.au)

**Issued Capital**  
404.27 million shares  
8.20 million options

**Registered Office**  
50 Angove Street  
North Perth WA

T. +61 8 6955 2955  
F. +61 8 6210 1153

**Brazilian Office**  
Av Jornalista Riccardo Marinho  
360 Ed Cosmopolitan Sala  
Barra da Tijuca  
Rio de Janeiro

T. +55 21 2439 5700

**Directors**  
Jeff McKenzie  
Michael Schmulian  
Will Dix