

BBX Minerals Ltd

ASX: BBX

Level 1
35 Havelock Street
West Perth WA 6005

Telephone +61 8 6955 2955
Fax +61 8 6210 1153

Av Jornalista Riccardo Marinho
360 Ed Cosmopolitan Sala
Barra da Tijuca
Rio de Janeiro

Telephone +55 21 2439 5700

Web:
www.bbxminerals .com.au

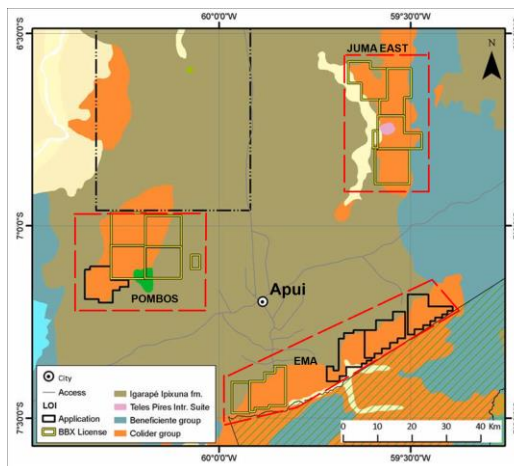
Email:
Jeff.Mckenzie@bbxminerals
com,au

Brazil Projects:
Juma East: copper- gold- silver

Eldorado Do Juma: gold

Pombos : copper –gold-lead -Zinc

EMA : gold- silver



**ASX MEDIA RELEASE 10TH JUNE
2015**

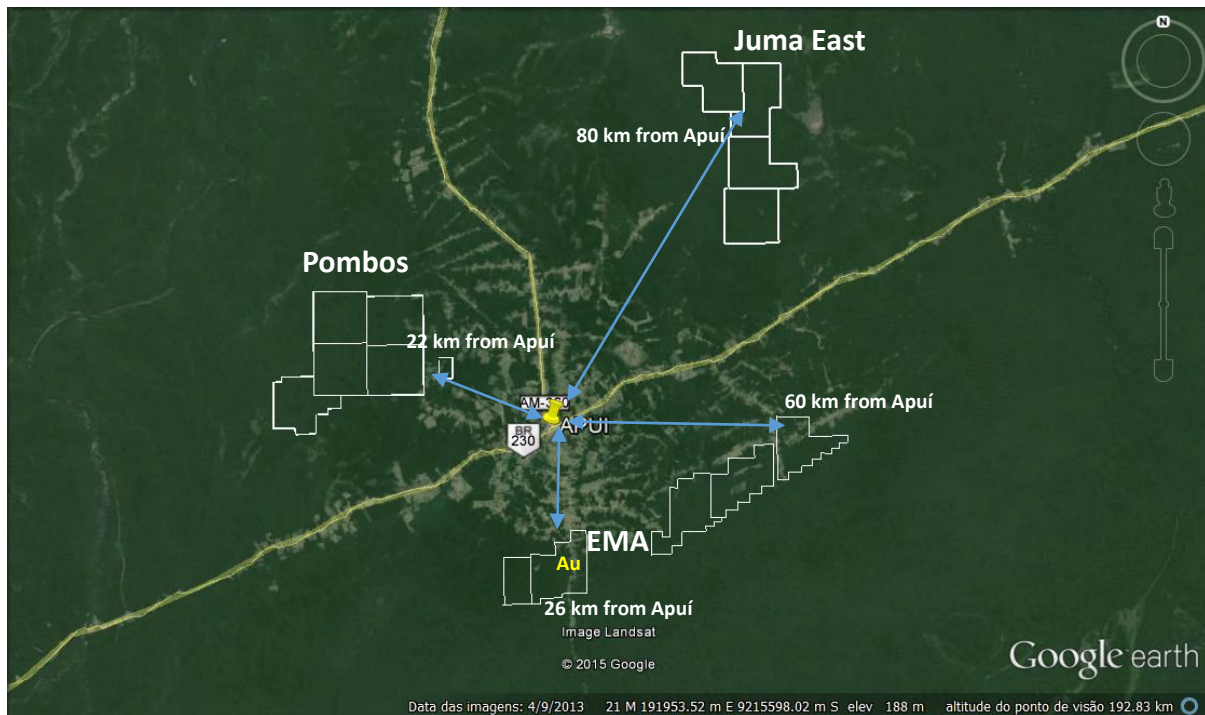
- **BBX OPTIONS 2
TENEMENTS AT ITS EMA
PROJECT**
- **BBX OPTMISES ITS APUI
REGION TENEMENTS**
- **BBX COMMENCES
DEFINING ZONES FOR A
LOW CAPEX TRIAL
MINING OPERATION**

BBX announced on 9th October 2014 that it had optioned 16 tenements. Since October 2014 BBX has been undertaking due diligence on the tenements optioned and has now named these areas the Pombos and EMA Projects.

BBX will now have four distinct project areas

1. Juma East Project
2. Pombos Project
3. EMA Project
4. Eldorado do Juma (subject to a definitive sale agreement)

Project Locations from Apuí



Map 1 – BBX’s exploration leases relative to Apuí city.

BBX Minerals Ltd (BBX), is continuing to undertake due diligence on its EMA and Pombos Projects.

As a result of the due diligence undertaken to date BBX via its 100% owned subsidiary Mineracao BBX do Brasil Ltda has optioned the following two tenements at its EMA project totalling 14,239.91 hectares, under the payment terms and conditions announced on 9th October 2014.

DNPM Permit Number 880108/2008 (EMA)	4,400 ha
DNPM Permit Number 880107/2008 (EMA)	9,839.91ha

BBX is working closely with the DNPM (Departamento Nacional de Producao Mineral) to have exploration licenses issued for the two optioned areas.

BBX has also extended the option held on its EMA and POMBOS projects for a further 120 days to enable due diligence to be completed on the following tenements.

DNPM Permit Number	880.088/2008(EMA)	9515.94ha
DNPM Permit Number	880.089/2008 (EMA)	9335.94ha
DNPM Permit Number	880.090/2008 (EMA)	8172.25ha
DNPM Permit Number	880.133/2008 (POMBOS)	8687.49 ha

The due diligence undertaken to date will result in BBX relinquishing the following tenement options and its Juma West application.

DNPM Permit Number 880.037/2012 – (Under application) Location Brazil (Juma West)	DNPM Permit Number 880.110/2008 (Under application) Location Brazil
DNPM Permit Number 880.112/2008 (Under application) Location Brazil	DNPM Permit Number 880.119/2008 (Under application) Location Brazil
DNPM Permit Number 880.123/2008 (Under application) Location Brazil	DNPM Permit Number 880.124/2008 (Under application) Location Brazil
DNPM Permit Number 880.127/2008 (Under application) Location Brazil	DNPM Permit Number 880.130/2008 (Under application) Location Brazil
DNPM Permit Number 880.132/2008 (Under application) Location Brazil	DNPM Permit Number 880.135/2008 (Under application) Location Brazil
DNPM Permit Number 880.136/2008 (Under application) Location Brazil	

EMA Project

BBX has now commenced detailed field work on the two optioned tenements. The yellow outlines in Map 2 below represent the regions where extensive old gold workings were reported by local garimpeiros and BBX is currently defining the zones prior to mapping and sampling.

- Extensive old gold workings (2000-2003) concentrated on the river banks around a circular hill, fine to medium grained granite with a stockwork of quartz veins. Fresh pyrite was documented in pan concentrates and in soils on the hill in addition to semi-oxidized pyrite on the hill-tops.
- Area is strategically located 26km from Apui with good access via unpaved roads with potential for high grade zones for early mining under a trial mining licence.
- BBX is targeting zones with a higher gold grade (3-4gt) than usually found in porphyry systems (0.5 to 1.5g/t).
- BBX expects to define the zones by end of the third quarter 2015.

Map 2 – Location of old gold workings as reported by local prospectors.



Pictures of a current minor operation at EMA lease inspected by BBX's team, where the prospector is processing friable white silica which hosts coarse free gold





POMBOS

The option over DNPM 880.133/2008 has been extended for a further 120 days to enable due diligence to be completed.

Pombos Project which is located 22km from Apui has a geological setting with potential for both high and low sulphidation epithermal gold deposits and polymetallic volcanogenic massive sulfide deposits similar to the Aripuanã Zinc Project.

Western Mining's exploration in this region during 1998/99 revealed two extensive anomalies with geological, geochemical and geophysical similarities with the Carpentaria Zinc Belt in NT-Queensland (Australia). Geochemically the stream sediment results showed anomalous Zn, Pb, Ag, (+ Hg, Ti, As).

BBX is currently compiling and processing all available data to confirm Western Mining's conclusions regarding the mineral potential of the Pombos region for SEDEX Zn-Pb-Ag deposits.

JUMA EAST

BBX is currently developing the camp site and improving the access to enable a ground geophysics – induced polarization program to start early July 2015.

Drilling tenders have been provided to 6 drilling contractors for its Juma East programme, with site visits scheduled in mid- June and tenders to be submitted by early-July to enable drilling to commence in Q3 2015.

Jeff McKenzie

CEO

BBX Minerals Ltd

+64 22 3421271

About BBX Minerals Ltd

BBX Minerals Limited (ASX: BBX) is a mineral exploration and mining company listed on the Australian Securities Exchange. Its major focus is Brazil, mainly in the southern Amazon, a region BBX believes is vastly underexplored with high potential for the discovery of world class gold and copper deposits.

BBX's key asset is the Juma East Gold Project in the Apuí region – Amazonas State. The company has 384 km² of exploration tenements within the Colider Group, a highly prospective geological environment for epithermal gold deposits and Cu-Au porphyry deposits. The region is under explored and could provide BBX with a pipeline of high growth, greenfields gold discoveries.