

INVESTOR UPDATE

Leading the way in gold and copper discoveries in Brazil – Apuí region

10 km of a low sulphidation system (Au-Ag) – Guida/Boia Velha target

5 km² of a rhyolite dome with breccia pipes (Cu-Au) – Plato target

This important notice and disclaimer applies to this presentation and any information provided in relation to or in connection with the information contained in it.

This presentation contains information in summary form. Some of the information is based on publicly available sources, has not been independently verified or may not be complete. It should be read in conjunction with the Company's other continuous and periodic disclosure announcements lodged with Australian Securities Exchange, which are available at www.asx.com.au.

This presentation contains forward-looking statements which involve a number of risks and uncertainties. These statements reflect current expectations, intentions or strategies regarding the future and assumptions based on currently available information. Should one or more of the risks or uncertainties materialize, or should underlying assumptions prove incorrect, actual results may vary from the expectations, intentions and strategies described in this presentation.

No representation or warranty is made as to the accuracy, completeness, reliability, fairness or correctness of the information contained in this presentation. To the maximum extent permitted by law, no person, including the company and their related bodies corporate, officers, employees and representatives (including agents and advisors), accept any liability or responsibility for loss arising from the use of such information.

This presentation is not a bidder's statement, prospectus or a product disclosure statement under the Corporations Act 2001 (Cth) or offering document under any other law. It has not been lodged with the Australian Securities and Investments Commission. This presentation is for information purposes only and is not financial product or investment advice or intended to be used as a basis for making an investment decision. It has been prepared without taking into account the investment objectives, financial circumstances, taxation position or particular needs of investors.

This presentation does not constitute an offer to issue or sell, or to arrange to sell, securities or other financial products. In particular, this presentation and the information contained in it does not constitute a solicitation, offer or invitation to buy, subscribe for or sell any security in the United States or to or for the account or benefit of any U.S. Person (as defined in Regulation S under the U.S. Securities Act of 1933, as amended (the US Securities Act)). The securities referred to in this presentation as being offered or sold have not been, and will not be, registered under the US Securities Act. Securities may not be offered or sold in the United States unless they have been registered under the US Securities Act or an exemption from registration is available.

The release, publication or distribution of this presentation in jurisdictions outside Australia may be restricted by law. Any failure to comply with such restrictions may constitute a violation of applicable securities laws.

The information in this report relates to exploration results is based on, and fairly represents, information and supporting documentation prepared by Mr. Antonio de Castro who is a Member of the Australasian Institute of Mining and Metallurgy. BBX's Consulting Geologist Mr. Castro has sufficient experience which is relevant to the style of mineralization and the type of deposit under consideration and to the activity which he is undertaking to qualify as a competent person as defined in the 2012 Edition of the Joint Ore Reserves Committee (JORC) "Australasian Code for Reporting of Exploration Results, Mineral Resources and Ore Reserves". Mr. Castro consents to the inclusion in the report of the matters based on his information.

“Discovery driven – leveraging BBX’s exploration capital and expertise to create value on current projects”

THE STRATEGY

Substantially upgrade the current greenfields portfolio, bringing these assets to feasibility, to crystallize and return value to shareholders.

Establish a low capex gold operation in 2015, generating cash flow to fund the exploration and development of the substantial exploration ground controlled by BBX in the Apuí region

BBX’S CURRENT FOCUS

Gold and copper with a strategic focus on the Juma East project (100% BBX) in the Apuí region, and to continually evaluate new opportunities without geographical and commodity limitations.

BBX'S PORTFOLIO (100%) IN APUÍ REGION – 213,100 HECTARES

4



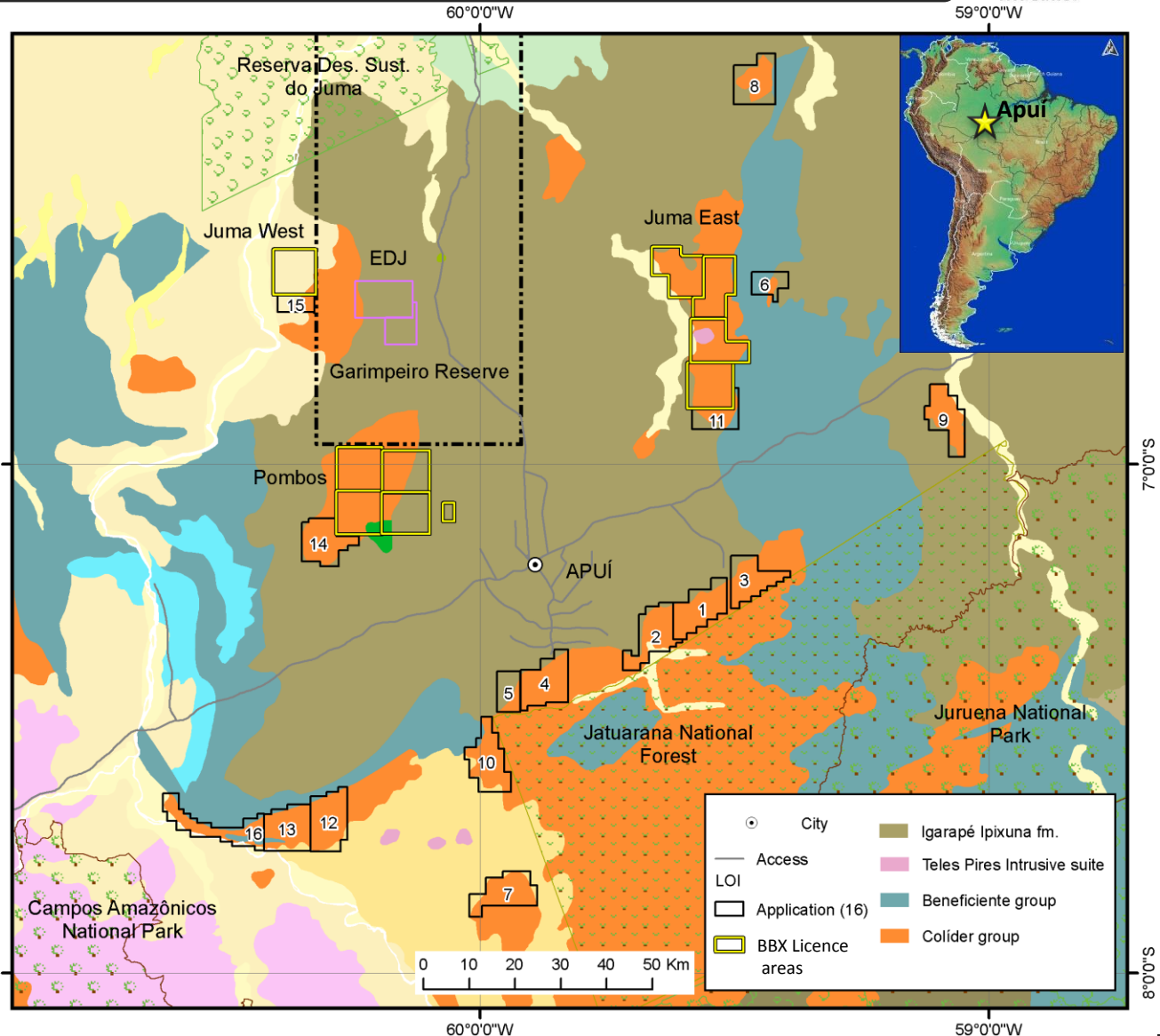
JUMA EAST (Au-Cu)
4 exploration licences
totaling 38,400 ha

Au-Ag in Guida
Cu-Au in Plato

REGIONAL (Au, Cu, Zn, Pb, Ag)

22 applications for exploration licenses
totaling 174,700 ha

Large Au old workings are present in a majority of licences; with Zn,Pb,Ag anomalies similar to Mc'Arthur River identified by third party work within the Pombos region, **with a coincident Pb/Zn±Ag anomaly** within a locally calcareous siltstone (± pyritic limestone) member of the basal Beneficiente Group



1st Quarter

- Establishment of a drilling camp at Plato
- Completion of an airstrip on top of the Plato Area.
- Soil sampling and mapping over regional target 1 – Boia Velha region

2nd Quarter

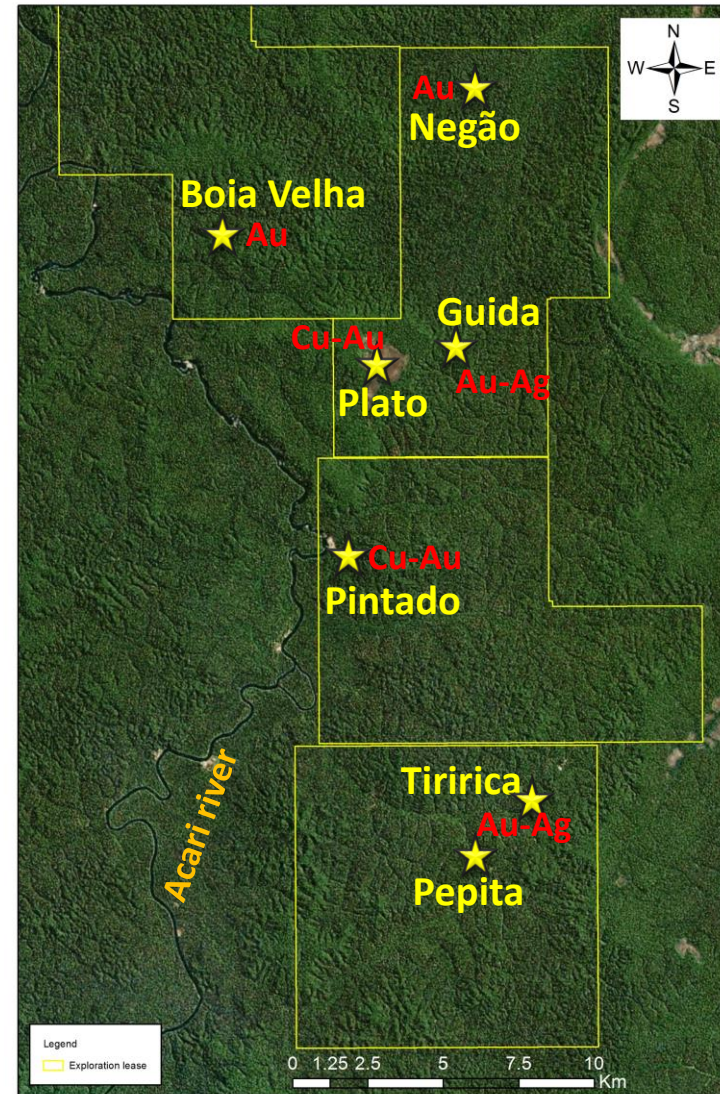
- 1,250 m of diamond drilling testing the breccia pipes at the Plato rhyolite dome
- Exploration of the Pepita and Tiririca old gold workings

3rd Quarter

- IP (induced polarization geophysics) at Guida target
- 1,000 m of diamond drilling at Pepita/Tiririca targets

4th Quarter

- 1,750 m of follow up drilling at Plato target
- Application for a trial mining permit (subject to drilling confirmation) at the Pepita/Tiririca targets

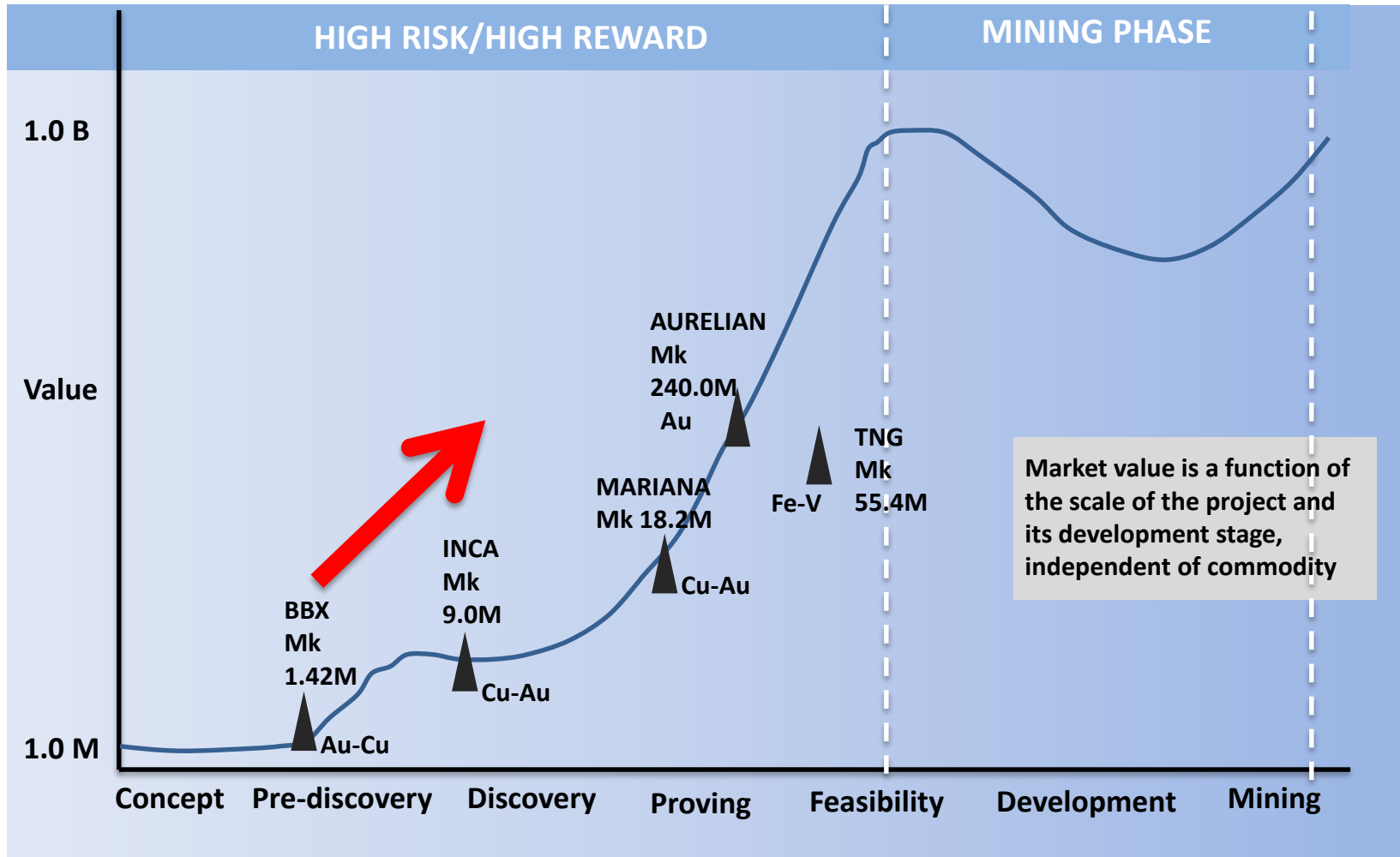


Capital Structure (24th November 2014)	
Share price	\$0.010
Market Capitalisation	\$1,184,454
Shares Issued	118,454,232
Options Issued	23,500,000
Warrants Issued	None
12 month high/low	\$0.022/0.008
Cash position (24 th November 2014)	A\$0.250m

Top Shareholders (24th November 2014)	
National Nominees	19.32 %
Lauren Page invest.	12.20 %
Leo Caddie invest.	9.33 %
Yardie (WA) PTY	7.29 %
ABN AMRO	4.26 %
Director & Management	3.59 %

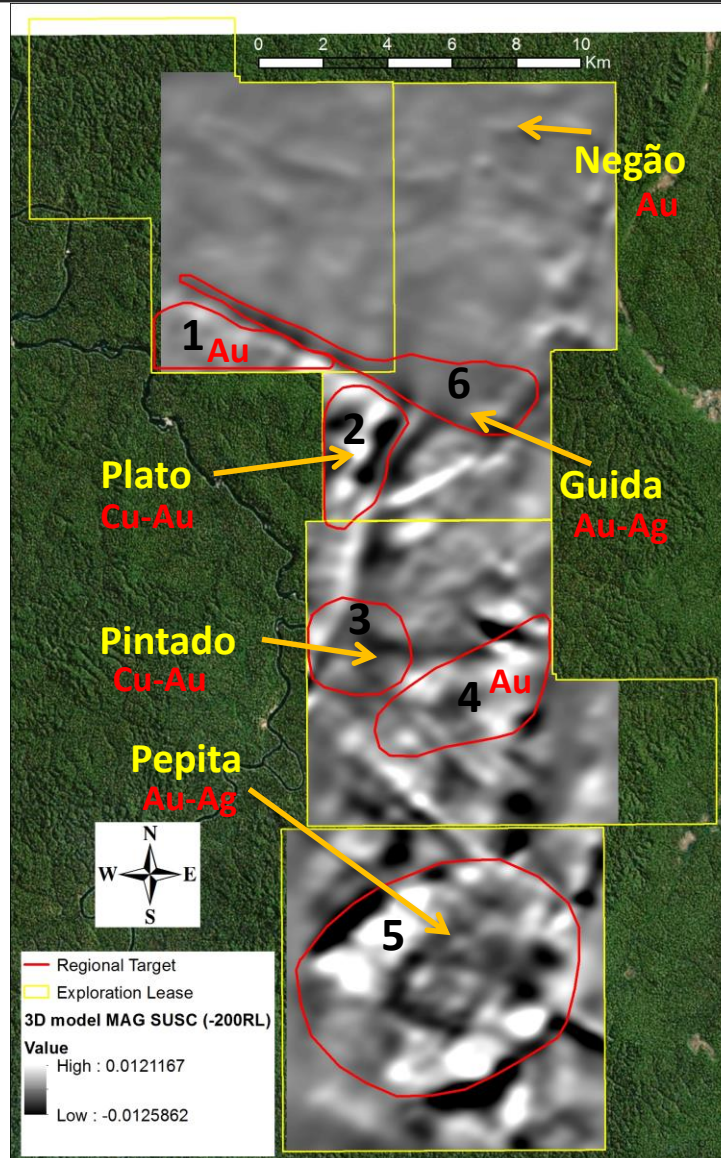
Capital Raised
2011- \$0.74m
2012 -\$2.25m
2013 -\$0.70m
2014 - Nil

BBX's Strategy is to advance the highly prospective JUMA EAST project, which offers the opportunity for a major discovery, up the development curve.



High grade Cu mineralisation in interpreted vertical pipes at Plato target (area 2), with multiple targets ready to be drill tested.

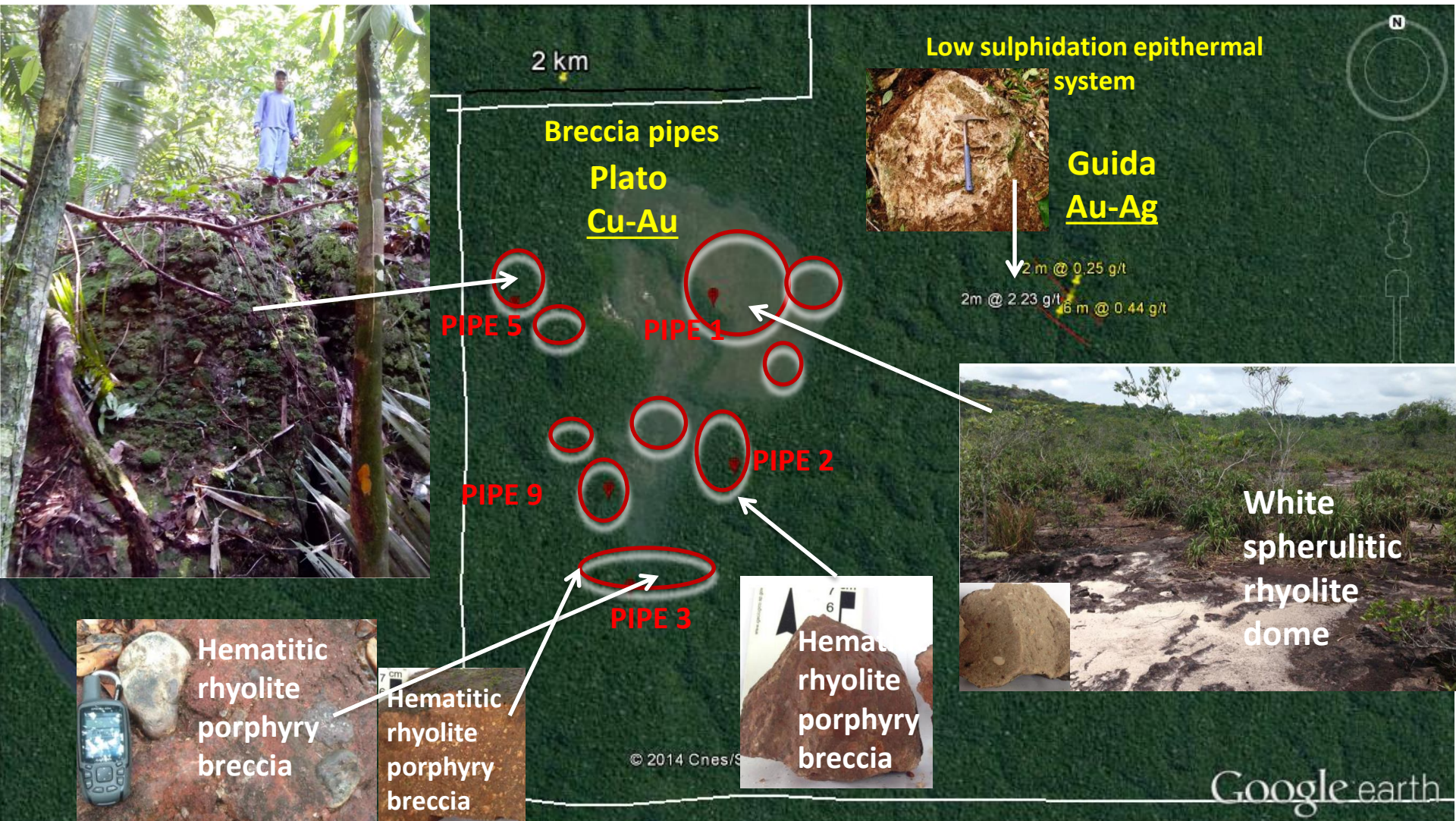
- High grade Au mineralisation in the Guida/Boia velha low sulphidation epithermal target (area 6)



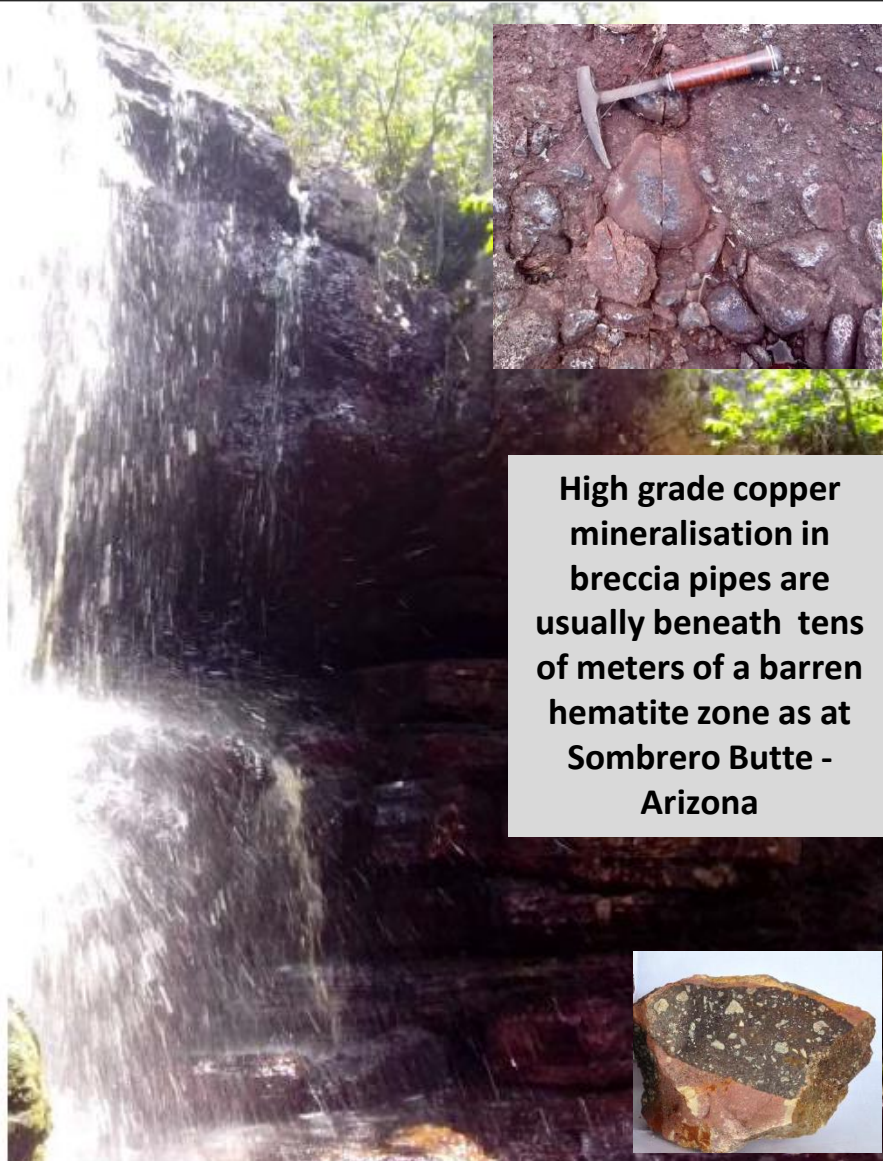
High grade Au mineralisation in the Pepita target (area 5) - epithermal mineralisation over a potential buried porphyry Cu-Au system.

Old gold workings associated with magnetic anomalies in areas 1-4 and magnetic depletion associated with K alteration in area 3.

PLATO TARGET - A RHYOLITE DOME WITH BRECCIA PIPES (CU-AU) ⁹



PLATO TARGET – SIGNATURE OF A WORLD CLASS CU-AU DEPOSIT¹⁰

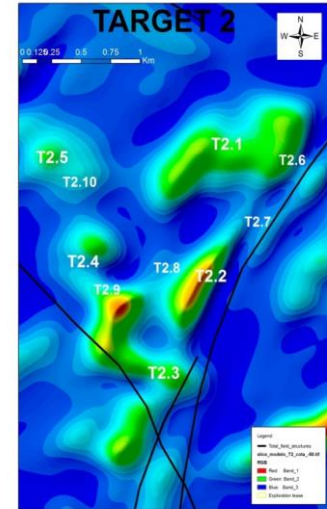


High grade copper mineralisation in breccia pipes are usually beneath tens of meters of a barren hematite zone as at Sombrero Butte - Arizona

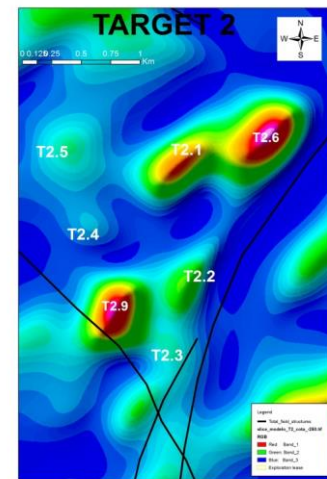


Slice depths at -50m RL and -250m RL from the 3D susceptibility model shows increase in susceptibility with depth. The magnetic anomalies at Plato are caused by remanent magnetisation usual in IOCG deposits

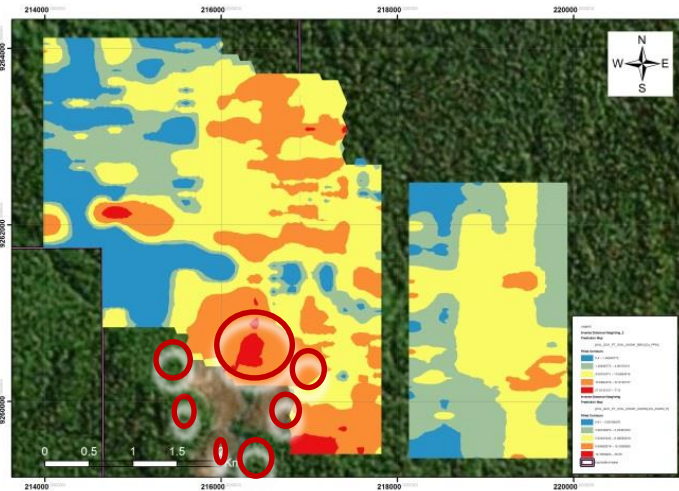
200m below surface



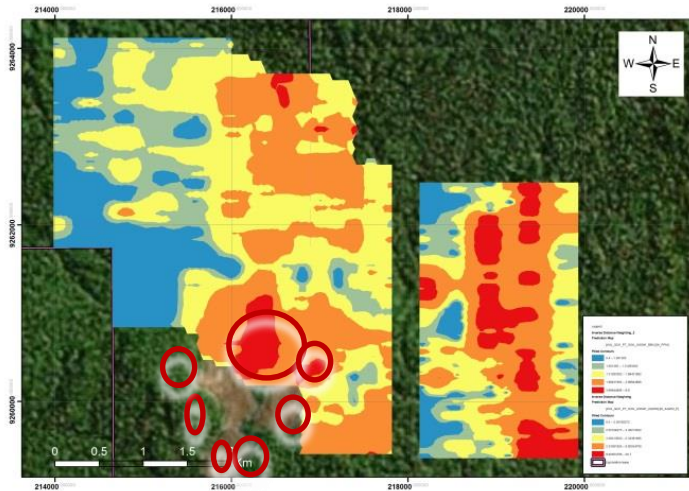
400m below surface



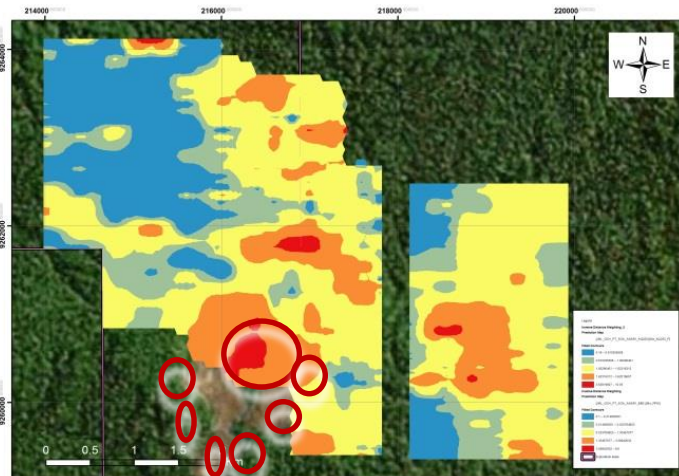
Map A – Cu (copper)



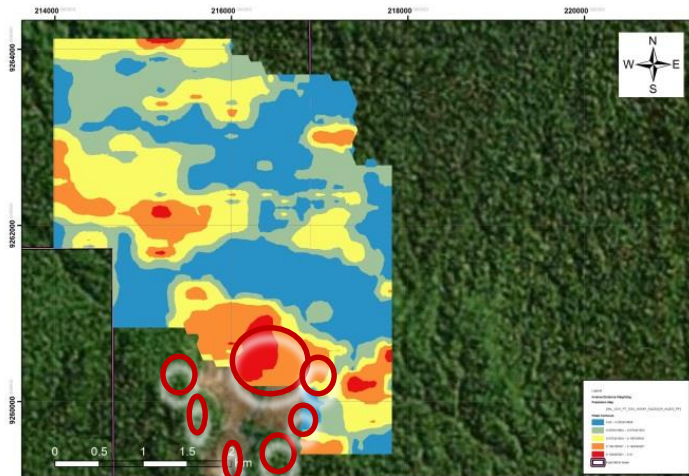
Map B - Ni (nickel)



Map C - Mo (molybdenum)



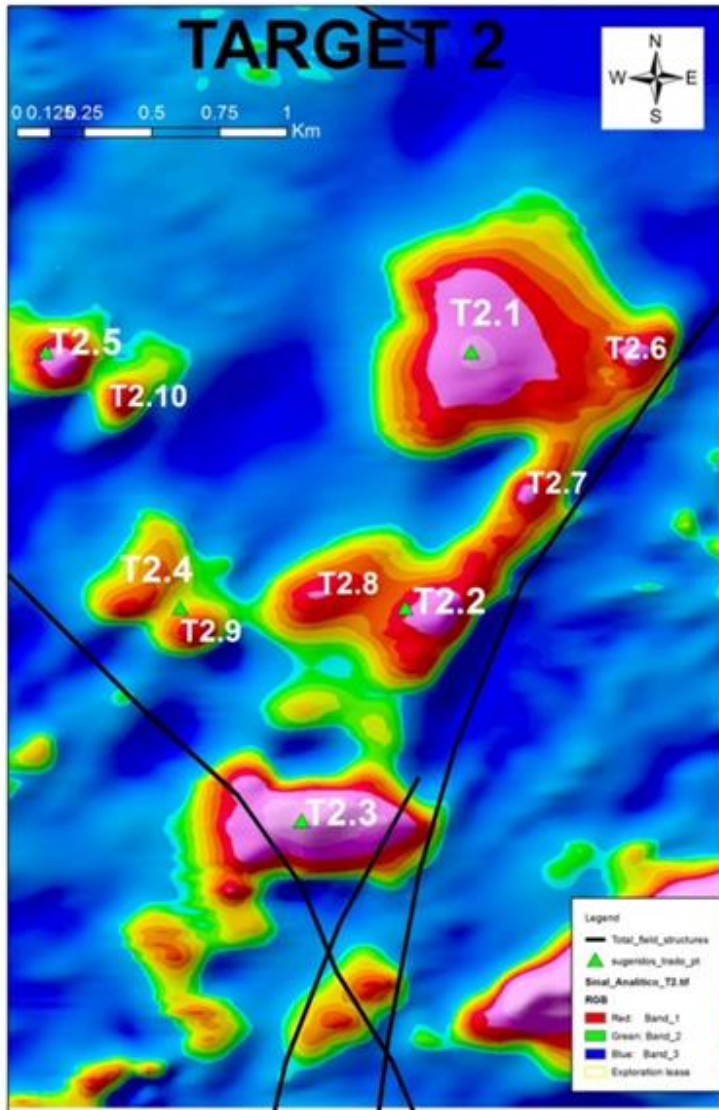
Map D – W (tungsten)



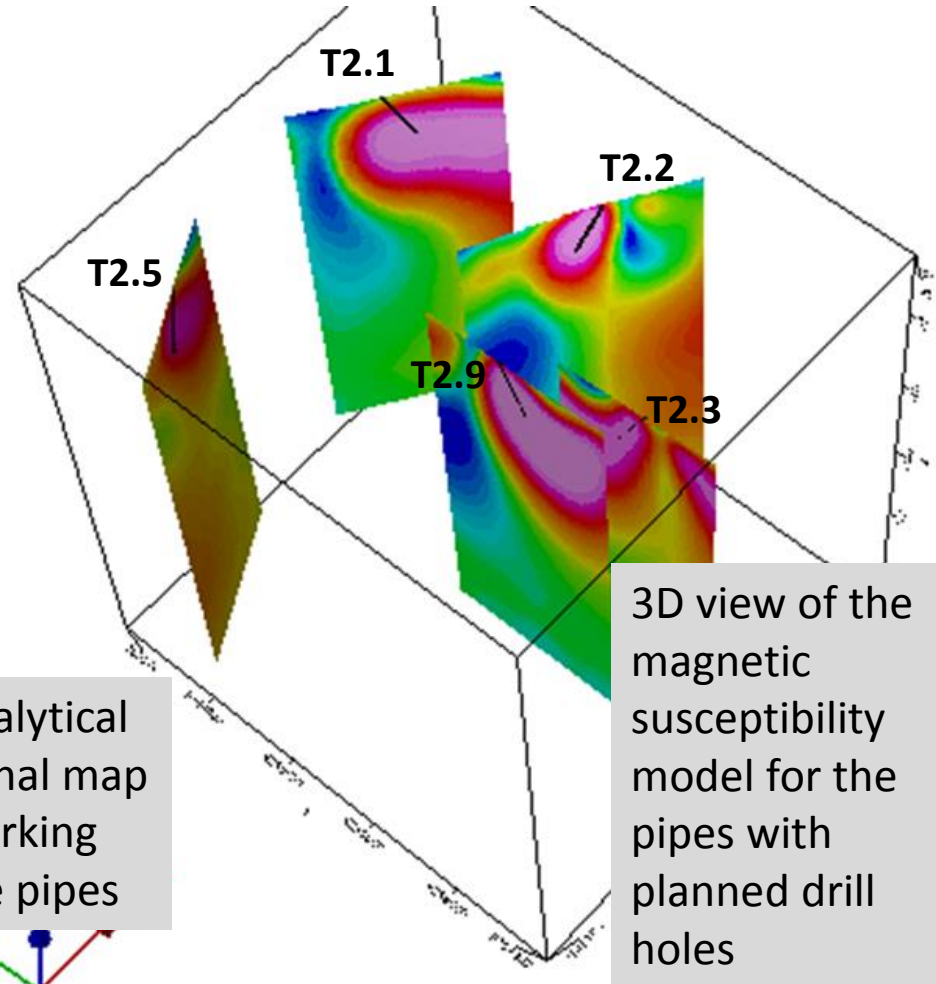
**Anomalous
Cu-Ni-Mo-W
over the
geophysical
targets,
typical
geochemical
signature of
high grade
copper
breccia pipes**



**Magnetic highs
= interpreted
pipes**

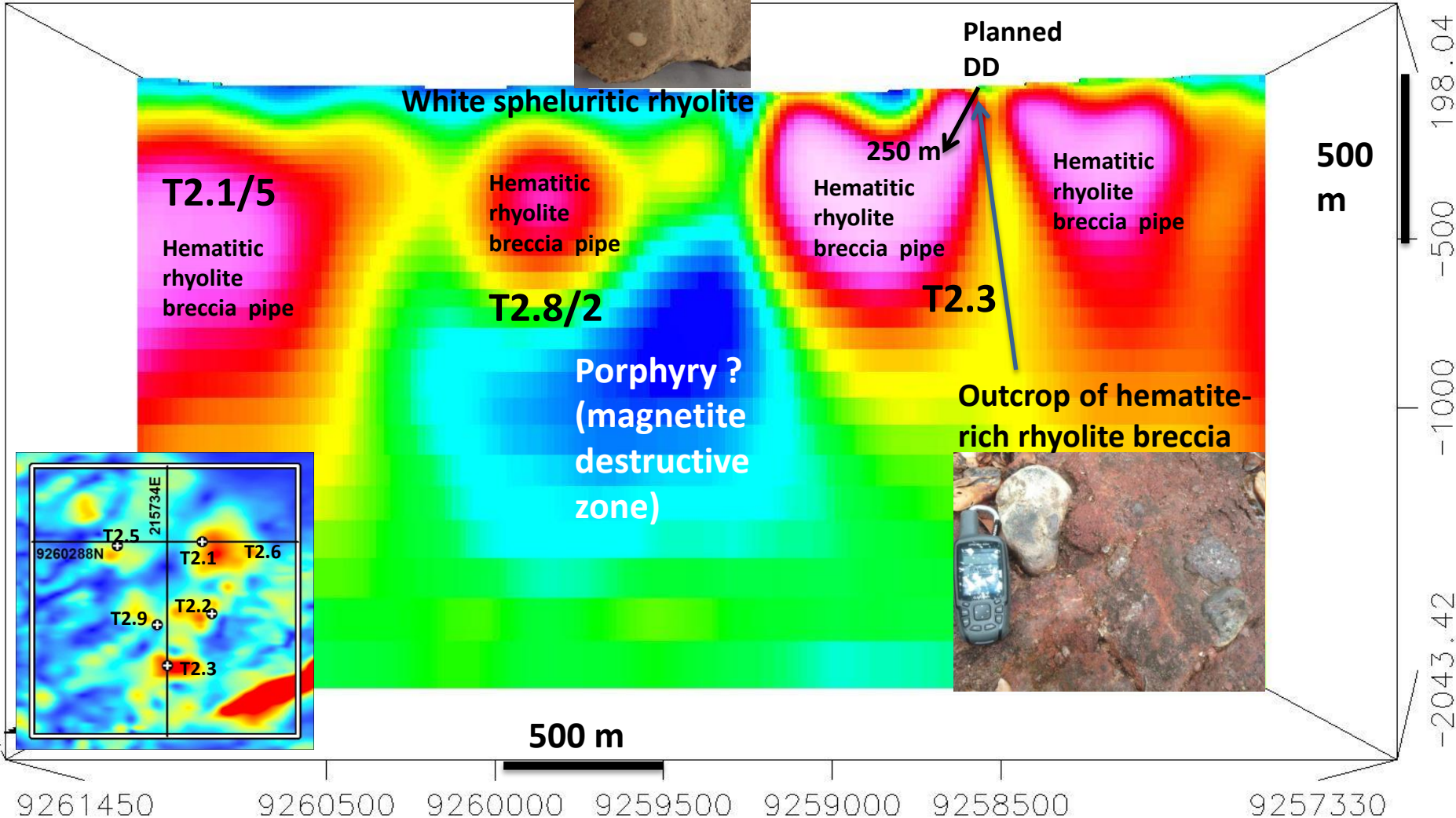


2nd Quarter
1,250 m of diamond drilling testing the interpreted breccia pipes at the Plato rhyolite

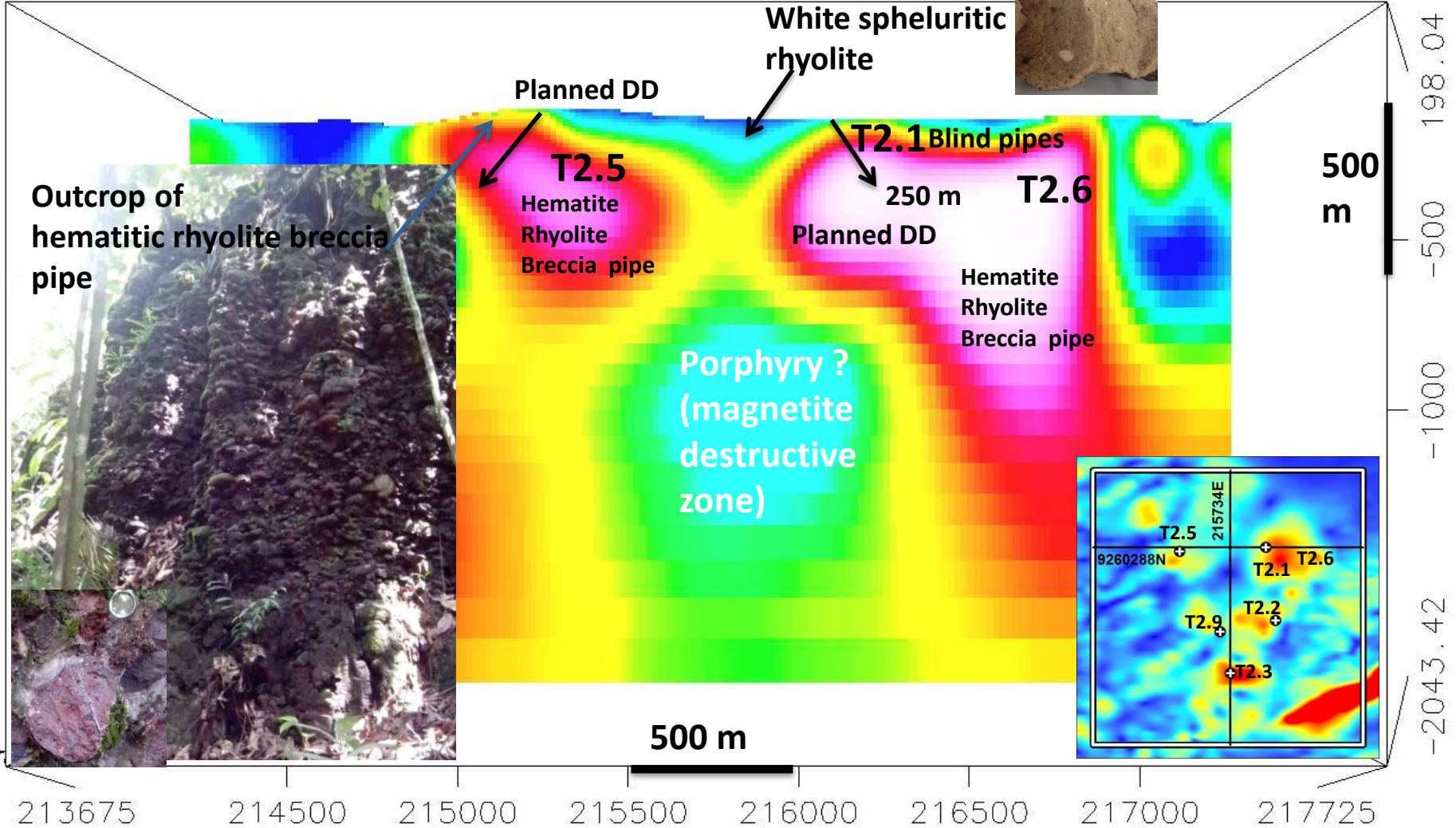


Analytical signal map marking the pipes

CROSS SECTION N-S AT 215.734 EAST

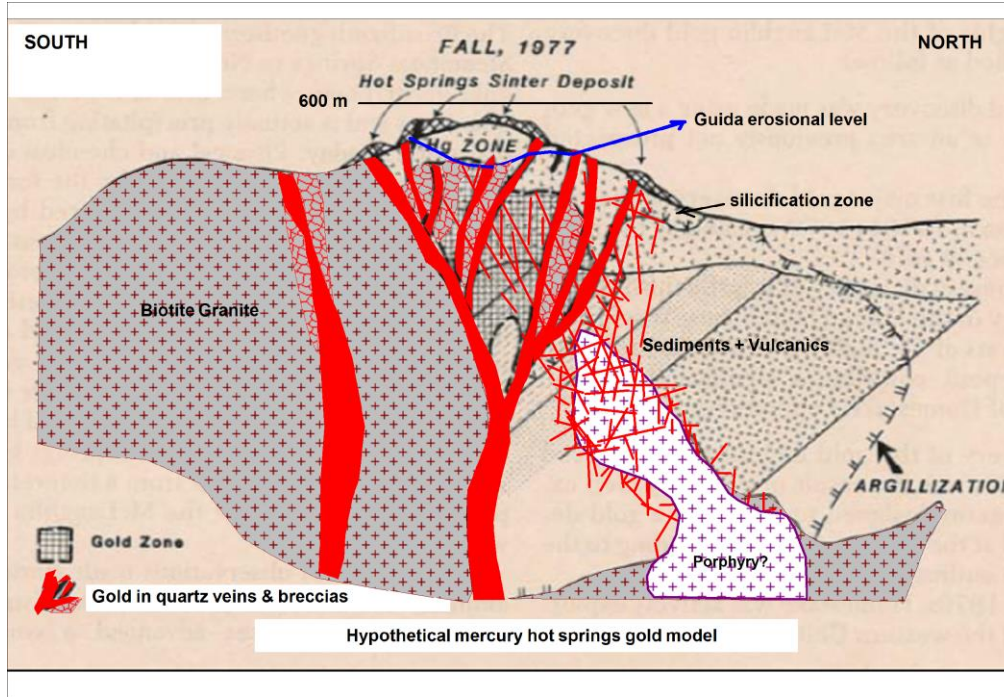


CROSS SECTION W-E AT 9.260.288 N





Pseudo acicular quartz



Colloform

Quartz
pseudomorphism
platy carbonate

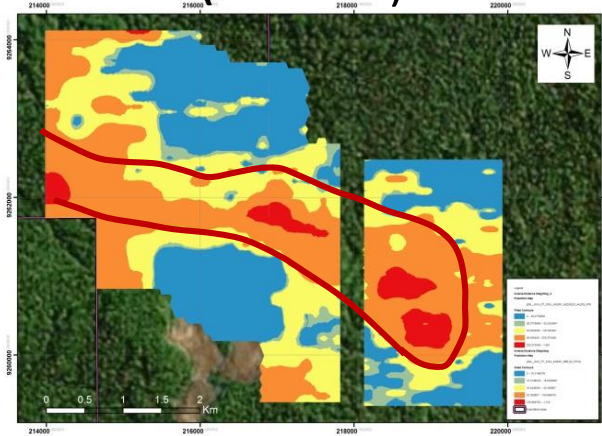


- Au in saprolite associated with siliceous rocks with silica texture typical of Low Sulphidation Au-Ag systems
- Presence of hydrothermal breccia
- Follow up work consisting of infill soil sampling and ground geophysics IP – Q3

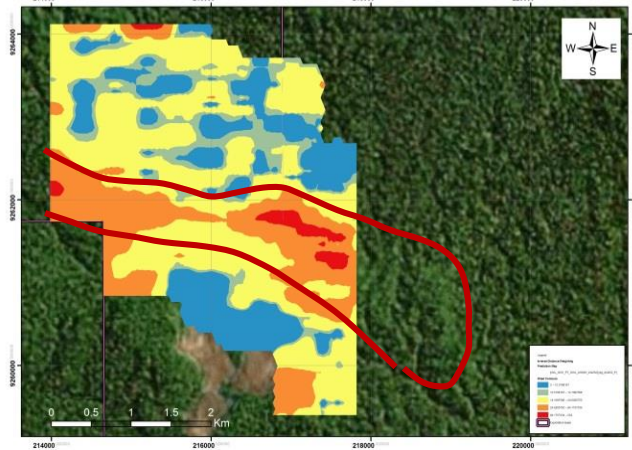
Lattice-bladed



V (vanadium)

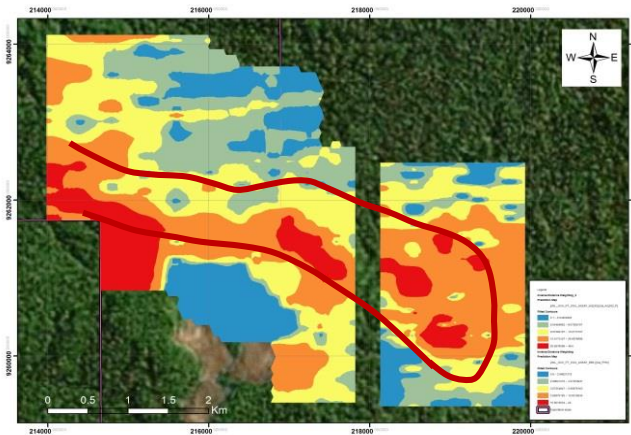


Ag (silver)

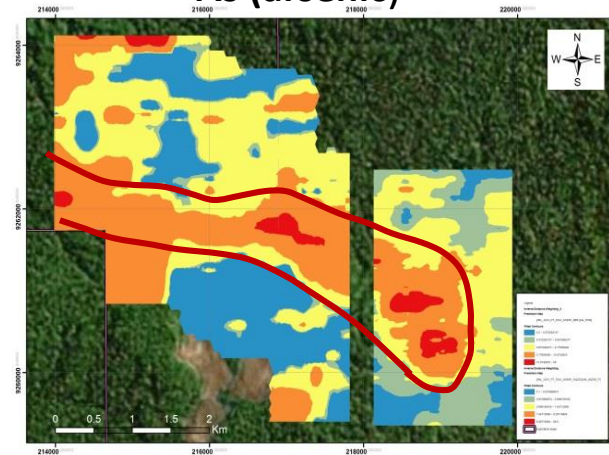


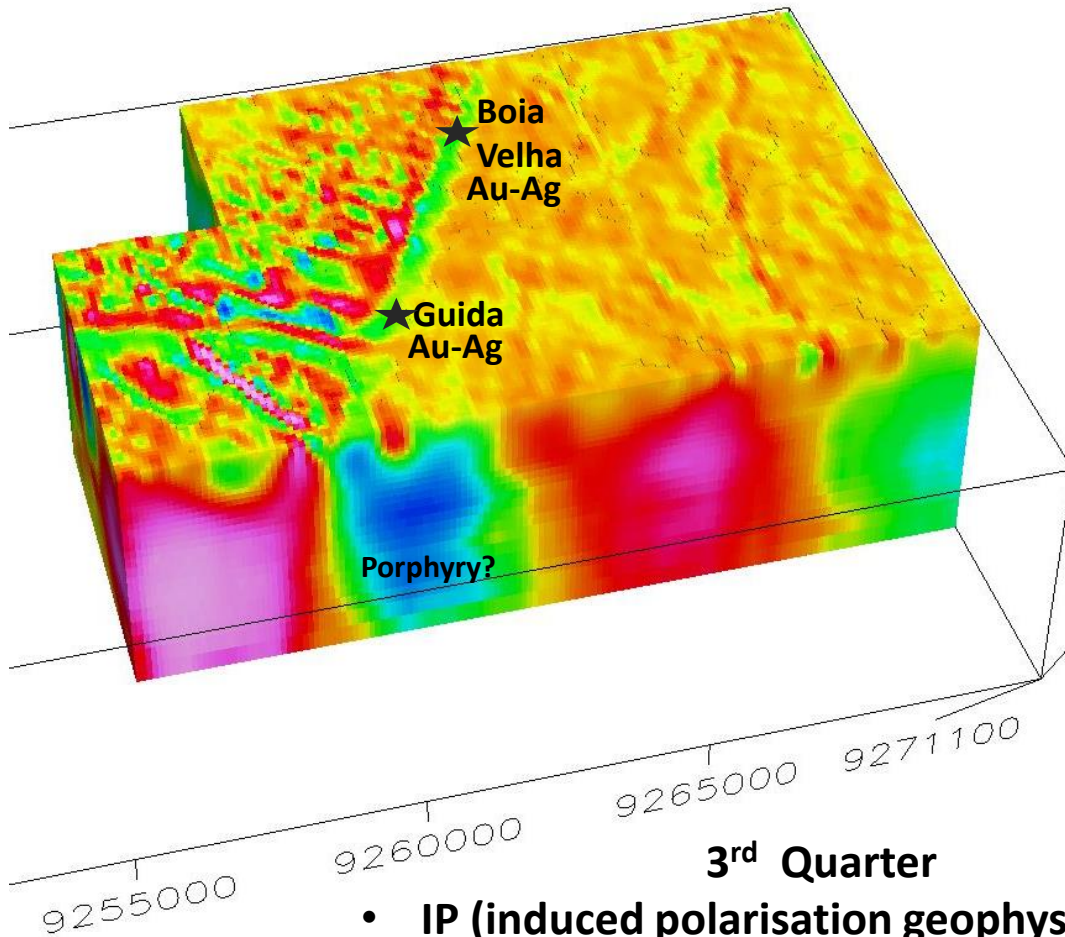
geochemical signatures typical of large epithermal and/or porphyry gold deposits measuring 6 km oriented N60W by about 1 km in width

Ga (galium)

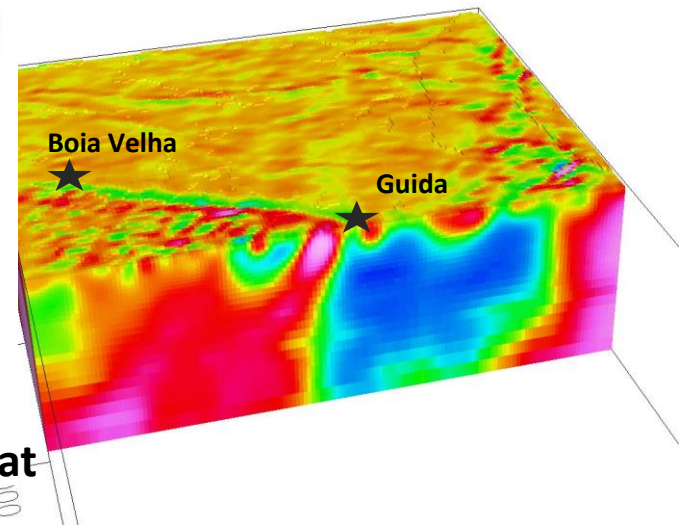


As (arsenic)

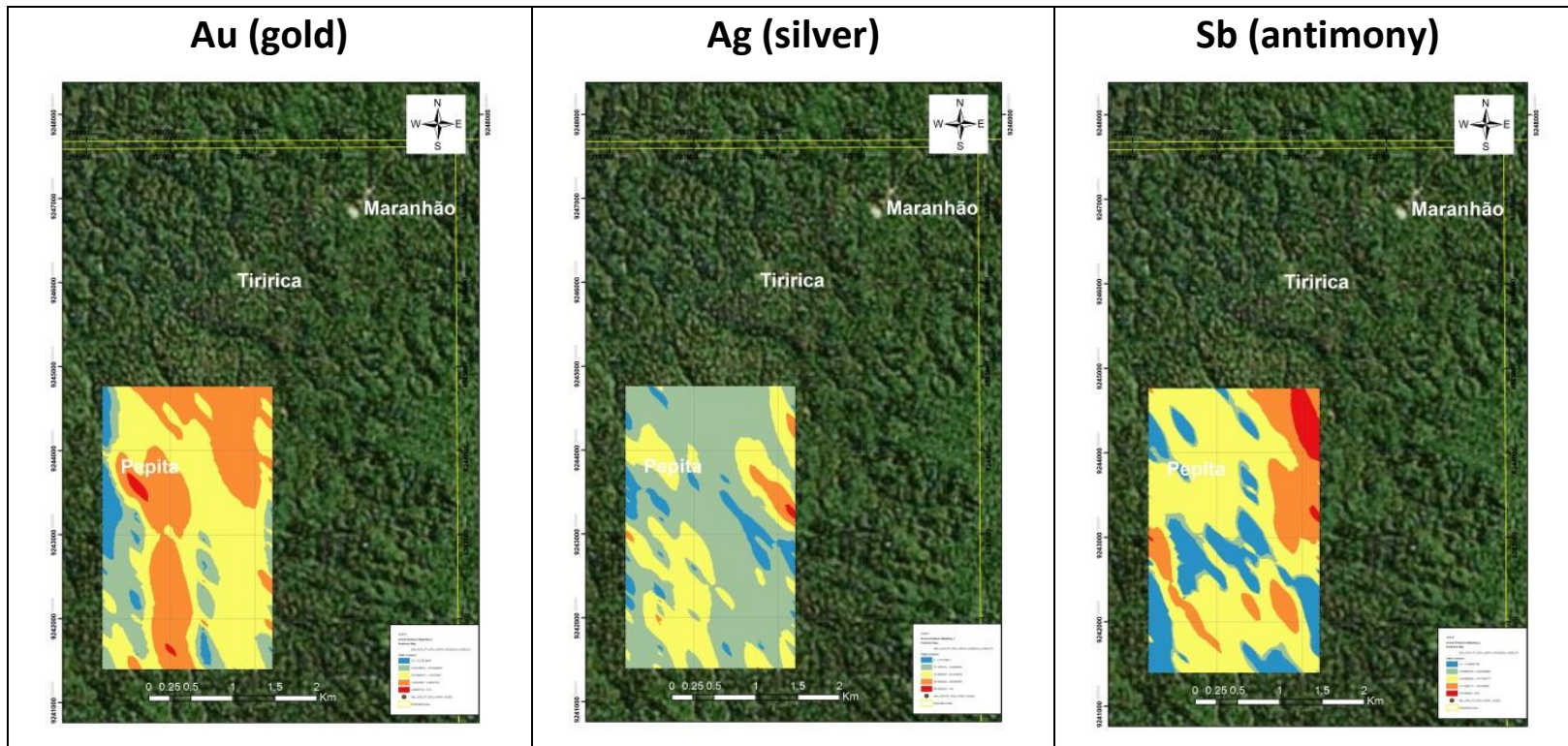




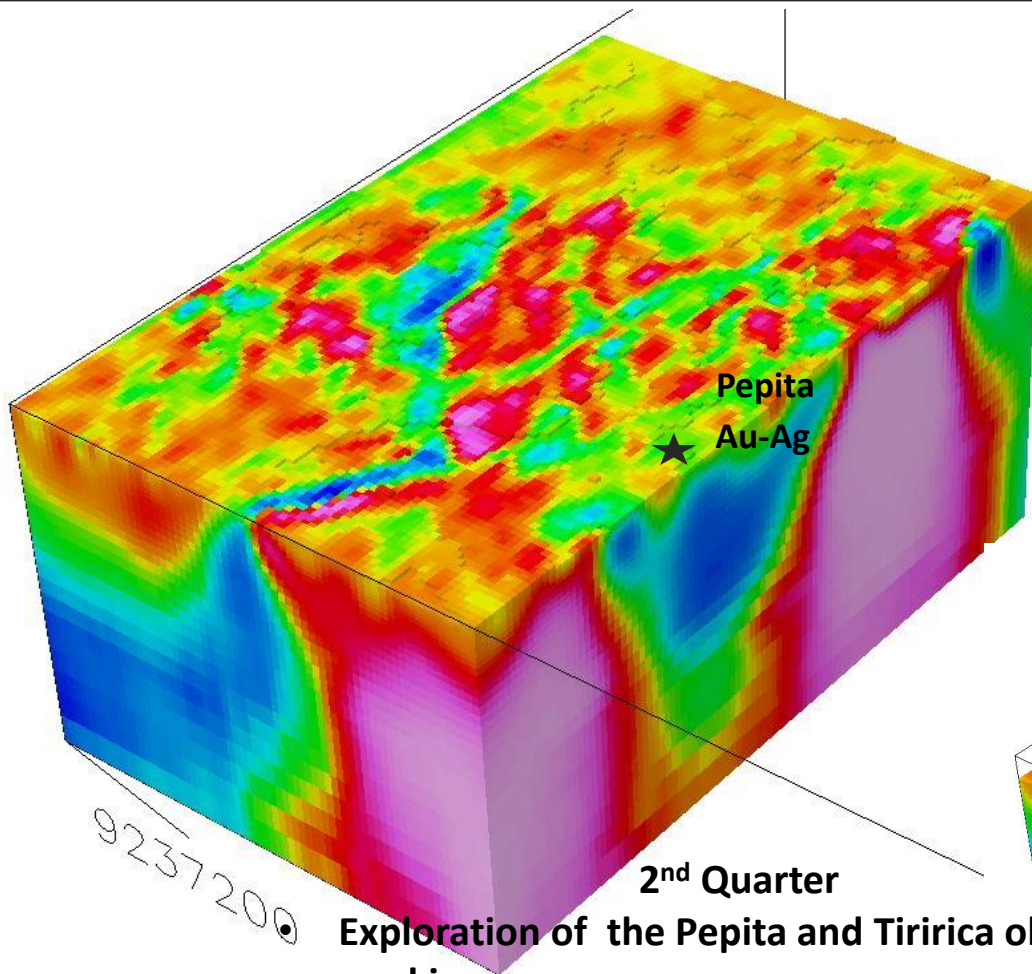
3D view of the magnetic susceptibility model showing the demagnetised fault zone Guida-Boia Velha



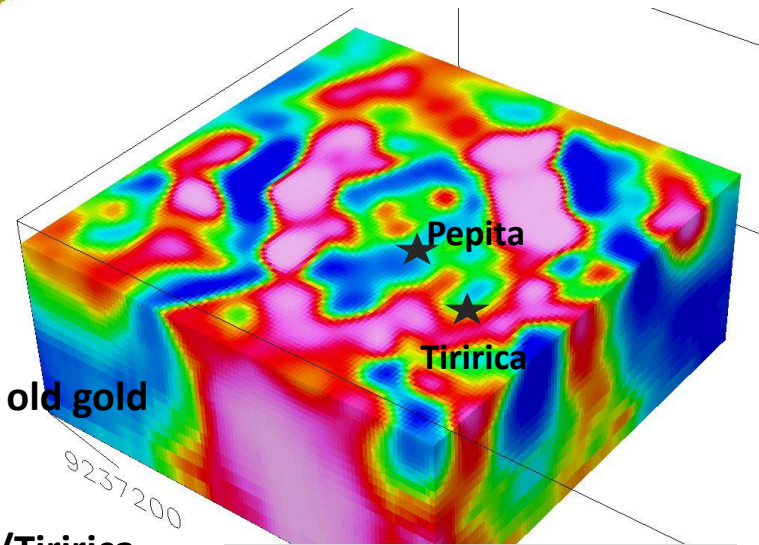
- IP (induced polarisation geophysics) at Guida target



The Au-Ag mineralization in this region is associated with Ba-Mn at Tiririca and As-Sb-Mo-Bi in the region between Pepita-Tiririca and Maranhão.



3D view of the magnetic susceptibility model showing the demagnetized zone related to Pepita and Tiririca



Depth slice – 400m RL

Exploration of the Pepita and Tiririca old gold workings

- 1,000 m of diamond drilling at Pepita/Tiririca targets



Breaking new ground, going where no other exploration company has ever been



THE BOARD

Mike Schmulian, Non-executive Chairman

-- *WMC, AngloGold Ashanti, Mundo Minerals, currently COO of ASX- listed Crusader Resources -- based in Rio de Janeiro - Brazil*

William Dix, Non-executive Director

-- *A geologist with 18 years experience in base metal, uranium and gold
-- based in Perth - Australia*

Alastair Smith, Non-executive Director

-- *Director of Blackwood Equities (NSW) Pty Ltd
-- based in Los Angeles – USA & Sydney Australia.*

MANAGEMENT & CONSULTANTS

Jeff Mckenzie, Acting CEO

-- *Former CEO of PSIG Group Beijing. Banker with ANZ for 33 years.
-- based in Christchurch – New Zealand & Perth Australia*

Antonio de Castro, Consultant - Exploration Manager

-- *WMC, consultant to several Canadian and Australian junior exploration companies
-- based in Rio de Janeiro - Brazil*

Extensive land holdings – 213,100 hectares in a 100km radius from Apui

Diversified geological endowments with potential for world class mineral deposits

Diversified commodity targets , Au-Cu-Pb-Zn-Ag-Fe-V

- Drilling planned at Plato target – potential world class high grade copper breccia pipes
- Follow up soil sampling, mapping and ground geophysics planned at Guida target, with potential for high grade gold lodes in a low sulphidation epithermal system
- Drilling planned at Pepita target – potential outcropping high grade gold stockwork amenable for trial mining
- High level of drilling activity planned for 2015

BBX unlocking the mineral potential of the Apuí region.

Australia

**Suite 1 Level 1
35 Havelock Street
West Perth WA Australia 6005**

**T + 618 6555 2955
F + 618 6210 1153**

info@bbxminerals.com.au

Brazil

**Av. Jornalista Ricardo Marinho 360
Ed. Cosmopolitan – Sala 113
CEP 22631-350
Barra de Tijuca, Rio de Janeiro**

T + 55 21 2439 5700