



ASX MEDIA RELEASE 24 DECEMBER 2013

MARKET UPDATE

- JUMA EAST EXPLORATION LICENSES TRANSFERRED TO BBX MINERALS

JUMA EAST

The DNPM (Departamento Nacional de Produção Mineral) has transferred 4 exploration licenses to BBX Minerals' 100% subsidiary MINERAÇÃO BBX DO BRASIL LTDA, which were granted to Raquel Correia da Silva covering Juma East tenements, over which BBX Minerals held an option to purchase, which has been exercised.

The permits transferred are as follows:

DNPM Permit Number 7124/2013 - 880.115/2008 Raquel Correia da Silva Assignee Mineracao BBX do Brasil Ltda

DNPM Permit Number 7125/2013 - 880.116/2008 Raquel Correia da Silva Assignee Mineracao BBX do Brasil Ltda

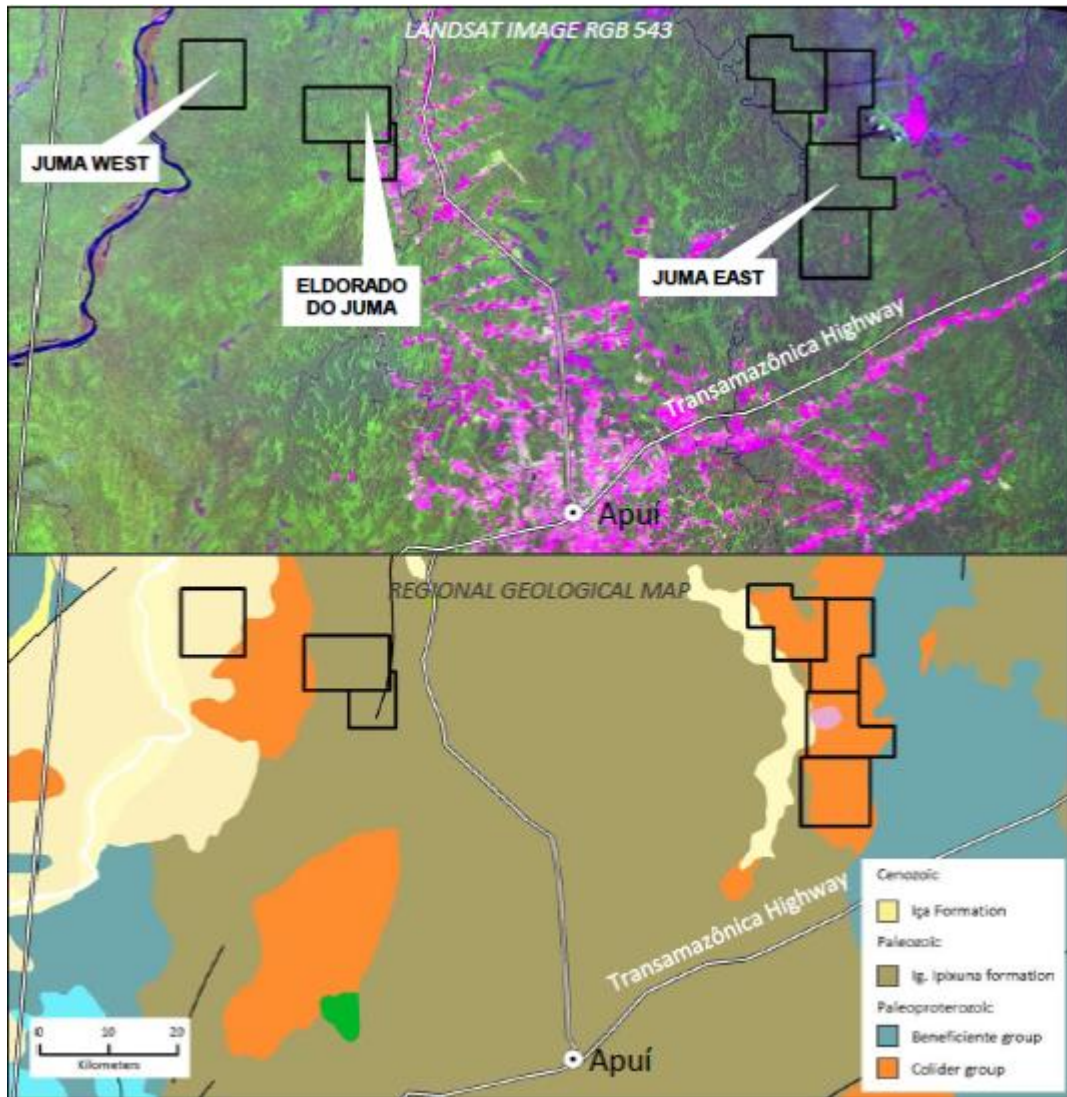
DNPM Permit Number 7126/2013 - 880.117/2008 Raquel Correia da Silva Assignee Mineracao BBX do Brasil Ltda

DNPM Permit Number 7126/2013 - 880.129/2008 Raquel Correia da Silva Assignee Mineracao BBX do Brasil Ltda

JUMA EAST

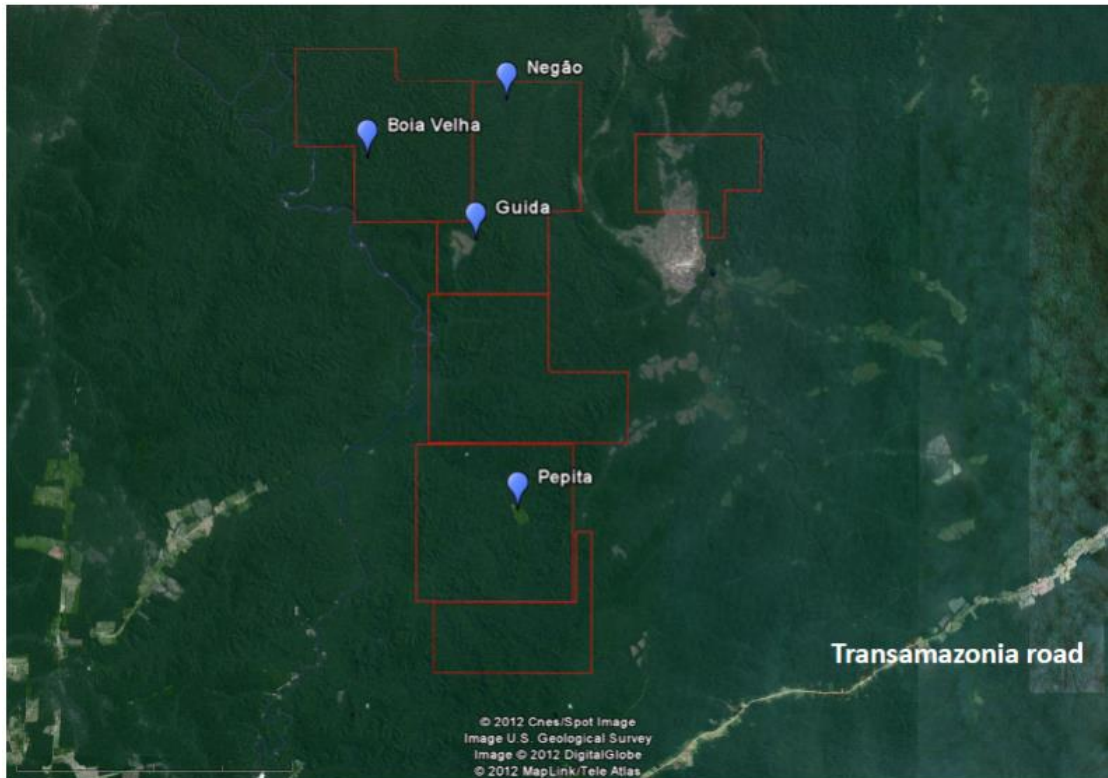
The tenements, which cover an area of 38,448 hectares contain widespread garimpero activity in both alluvials and in-situ oxidised rock.

The Juma East project is located in a favourable geological setting in prospective metasediments and metavolcanics of the Iriri and Colider Groups.



AUSTRALIA Suite 1, Level 1 35 Havelock Street | West Perth, WA 6005
 T +61 8 6555 2955 | F +61 8 6210 1153

BRAZIL Av Jornalista Ricardo Marinho, 360 | Ed. Cosmopolitan – Sala 113 | CEP 22631-350 | Barra da Tijuca – Rio de Janeiro – RJ –
 Brasil
 T +55 21 2439 5700



For further information, please contact:

BBX Minerals Limited

Jeff McKenzie | Acting CEO

Tel: +64 223421271

Jeff.mckenzie@bbxminerals.com.au

AUSTRALIA Suite 1, Level 1 35 Havelock Street | West Perth, WA 6005
T +61 8 6555 2955 | F +61 8 6210 1153

BRAZIL Av Jornalista Ricardo Marinho, 360 | Ed. Cosmopolitan – Sala 113 | CEP 22631-350 | Barra da Tijuca – Rio de Janeiro – RJ –
Brasil
T +55 21 2439 5700