

BBX Minerals Ltd

ASX: BBX

Level 1
35 Havelock Street
West Perth WA 6005

Telephone +61 8 6955 2955
Fax +61 8 6210 1153

Av Jornalista Riccardo Marinho
360 Ed Cosmopolitan Sala
Barra da Tijuca
Rio de Janeiro

Telephone +55 21 2439 5700

Web:
www.bbxminerals.com.au

Email:
Jeff.Mckenzie@bbxminerals.com.au

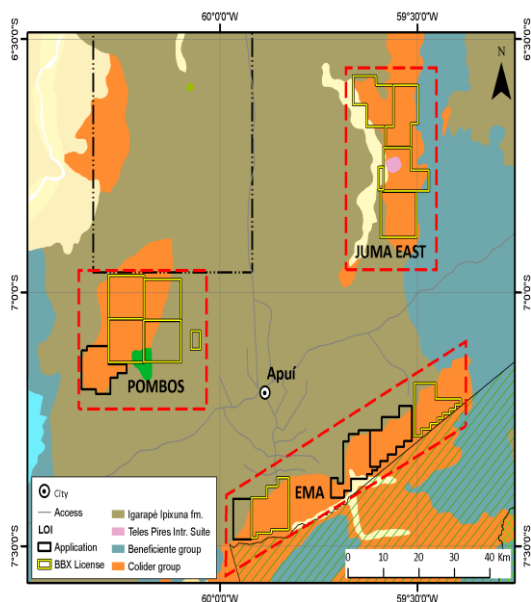
Brazil Projects:

Juma East: copper- gold- silver

Ema: copper-gold

Eldorado Do Juma: gold

Pombos: copper –gold



ASX MEDIA RELEASE 31TH AUGUST 2015

• BBX SIGNS DRILLING CONTRACT

• DRILLING PROGRAMME ON TARGET

BBX (ASX: BBX), via its 100% owned subsidiary Mineração BBX do Brasil Ltda has accepted a tender from Energold Perfuração~es Ltda, owned by Energold Drilling Corp of Canada (TSX- V: EGD) to drill its Guida and Plato prospects at its Juma East project.

Following the completion of the Induced Polarisation (IP) programme BBX has finalised the locations of its proposed drill holes and completed the base camp construction and widening of the access road to facilitate mobilisation of the drilling equipment.

BBX expects mobilisation to commence within the next 2-3 weeks and drilling to commence immediately the rig is on site.

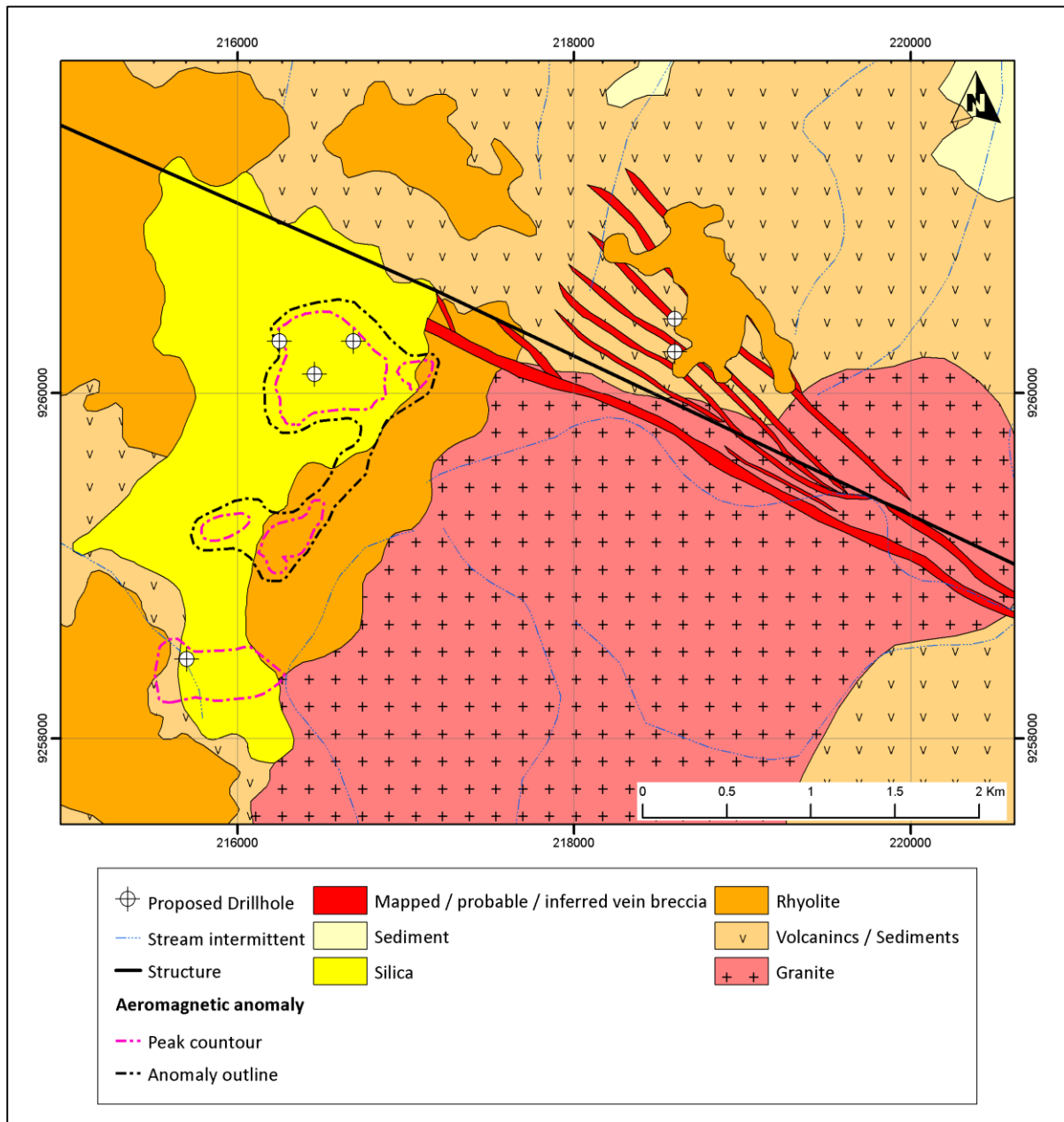
Under the drilling contract BBX will also issue the following shares to Energold:

On mobilisation a total of 117,187 shares and on demobilisation a total of 117,187 shares.

For each metre drilled, a total of 914 shares.

All shares will be issued on completion of the drilling programme

Location of drill holes at Guida and Plato



IPAAM Visit

IPAAM (State Environmental Agency) recently visited BBX's Juma East project and confirmed that BBX is in compliance with its obligations under the environmental licence.

Jeff McKenzie

CEO

BBX Minerals Ltd

+64 22 3421271

About BBX Minerals Ltd

BBX Minerals Limited (ASX: BBX) is a mineral exploration and mining company listed on the Australian Securities Exchange. Its major focus is Brazil, mainly in the southern Amazon, a region BBX believes is vastly underexplored with high potential for the discovery of world class gold and copper deposits.

BBX's key asset is the Juma East Gold Project in the Apuí region – Amazonas State. The company has 128 km² of exploration tenements within the Colider Group, a highly prospective geological environment for epithermal gold deposits and Cu-Au porphyry deposits. The region is under explored and could provide BBX with a pipeline of high growth, greenfields gold discoveries.